

English indices of multiple deprivation (IMD) 2015

The Indices of Deprivation 2015 provide a set of relative measures of deprivation for small areas (Lower-layer Super Output Areas*) across England, based on seven domains of deprivation. The domains were combined using the following weights to produce the overall Index of Multiple Deprivation:

- Income Deprivation (22.5%)
- Employment Deprivation (22.5%)
- Education, Skills and Training Deprivation (13.5%)
- Health Deprivation and Disability (13.5%)
- Crime (9.3%)
- Barriers to Housing and Services (9.3%)
- Living Environment Deprivation (9.3%)

Most of the data used in the Indices of Deprivation 2015 relates to the tax year 2012/13. An infographic guide to the index can be found by clicking [here](#)

* **LSOAs** (Lower-layer Super Output Areas) are small areas designed to be of a similar population size, with an average of approximately 1,500 residents or 650 households. There are 32,844 in England.

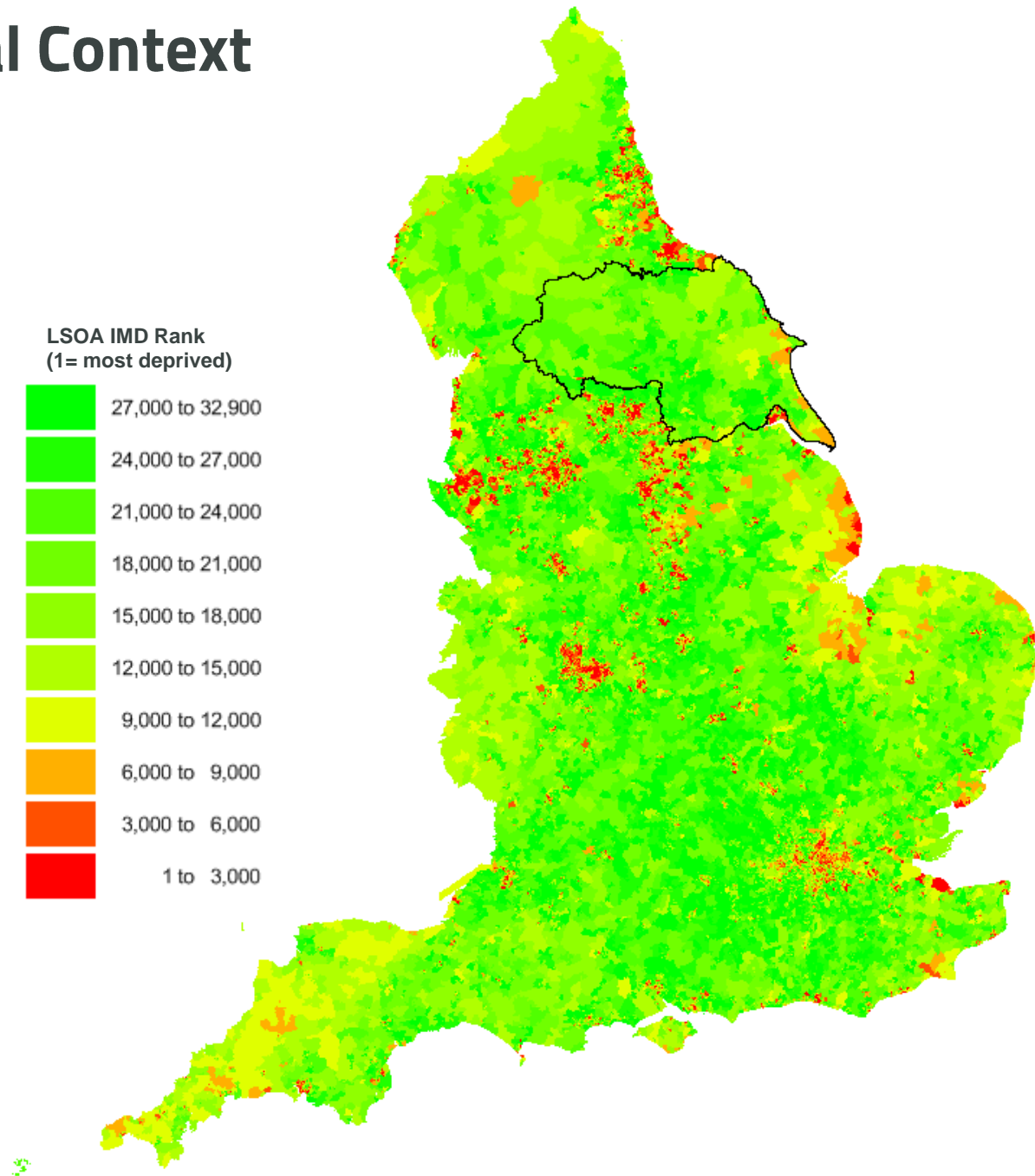
Source: [English indices of deprivation 2015](#) (Department for Communities and Local Government)

Local Context

The York, North Yorkshire and East Riding LEP (known as **‘the LEP’ hereafter**) has 620 Lower Super Output areas of which 4% fall within the most deprived 10% of LSOAs in the country.

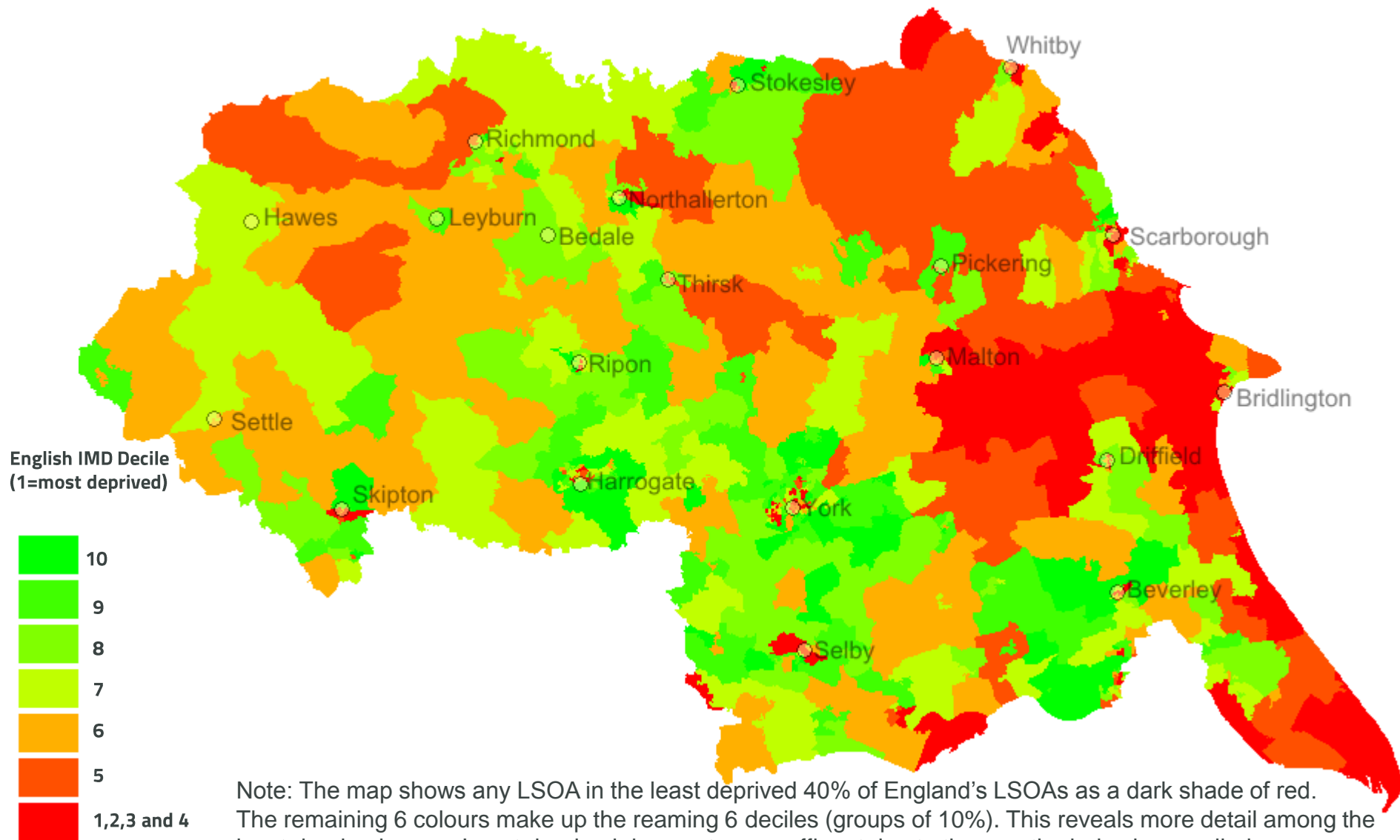
This contrasts with our neighbouring LEPs where 17% in Leeds City Region, 22% in the Humber LEP and 27% of LSOA's in the Tees Valley LEP fall within the 10% most deprived nationally.

Of the 24 LSOA's in the LEP which are in the most deprived 10% in England; 13 are in East Riding (including the 2 most deprived) and 9 are in Scarborough. A single LSOA in Harrogate and another in Selby complete the list.



Local Variations

Patterns of deprivation are complex in the LEP. Deprivation usually increases towards the coast however many parts of our main towns and the city of York are deprived.



Deprivation Domains

The seven domains of deprivation are as follows:

- The **Income Deprivation** Domain measures the proportion of the population experiencing deprivation relating to low income. The definition of low income used includes both those people that are out-of-work, and those that are in work but who have low earnings (and who satisfy the respective means tests).
- The **Employment Deprivation** Domain measures the proportion of the working-age population in an area involuntarily excluded from the labour market. This includes people who would like to work but are unable to do so due to unemployment, sickness or disability, or caring responsibilities.
- The **Education, Skills and Training Deprivation** Domain measures the lack of attainment and skills in the local population. The indicators fall into two sub-domains: one relating to children and young people and one relating to adult skills.
- The **Health Deprivation and Disability** Domain measures the risk of premature death and the impairment of quality of life through poor physical or mental health. The domain measures morbidity, disability and premature mortality but not aspects of behaviour or environment that may be predictive of future health deprivation.
- The **Crime** Domain measures the risk of personal and material victimisation at local level.
- The **Barriers to Housing and Services** Domain measures the physical and financial accessibility of housing and local services. The indicators fall into two sub-domains: 'geographical barriers', which relate to the physical proximity of local services, and 'wider barriers' which includes issues relating to access to housing such as affordability.
- The **Living Environment Deprivation** Domain measures the quality of the local environment. The indicators fall into two sub-domains. The 'indoors' living environment measures the quality of housing; while the 'outdoors' living environment contains measures of air quality and road traffic accidents.

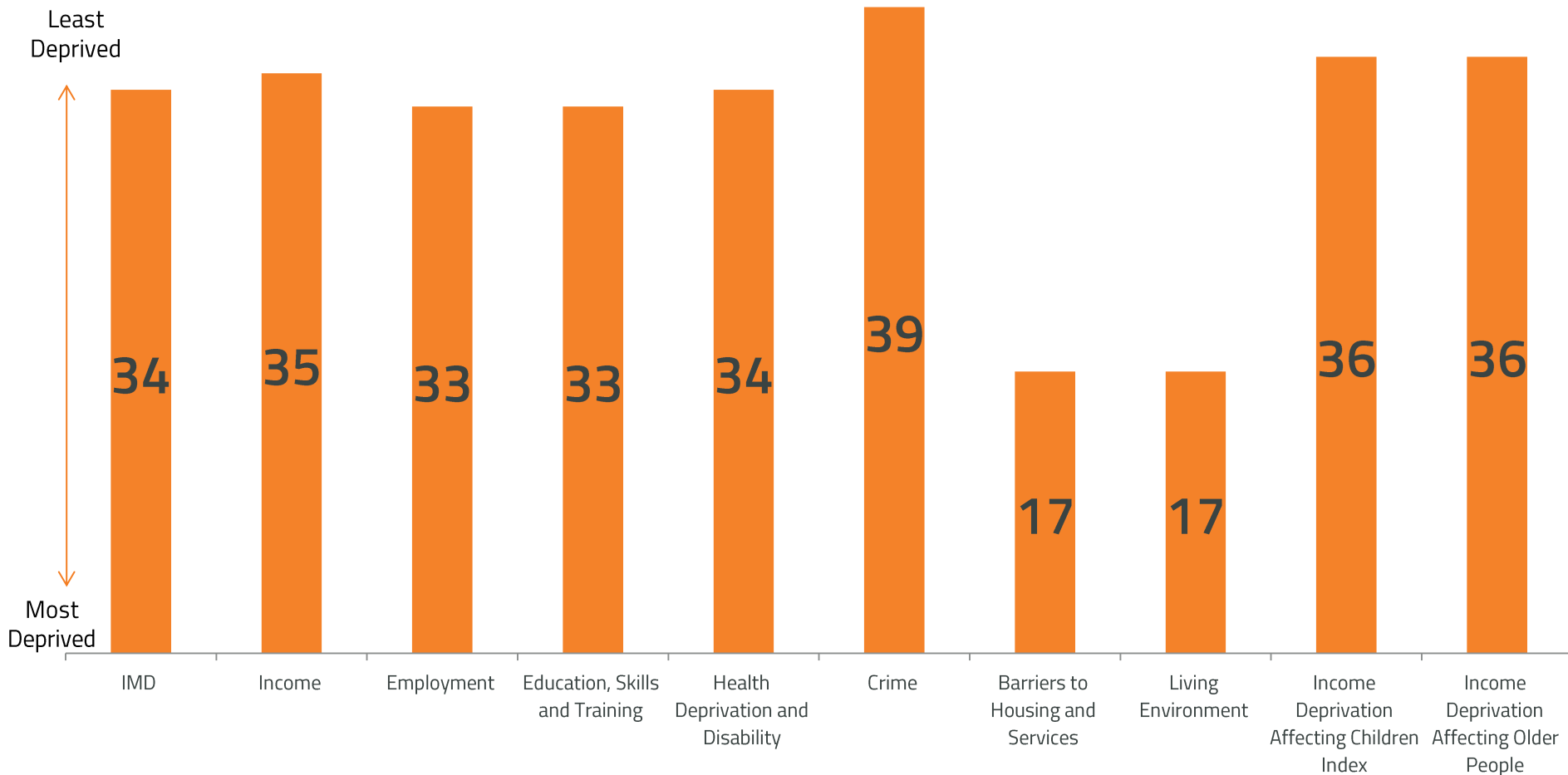
York, North Yorkshire and East Riding LEP headlines figures

The graph on the next page indicates the LEPs Rank out of 39 LEPs though unlike usual ranking systems the highest number indicates the most positive outcome and the lowest number the most negative (in this case deprivation). Headlines are:

- The LEP is the 6th Least deprived in the country. (coming behind Buckinghamshire Thames Valley, Enterprise M3, Oxfordshire, Hertfordshire and Thames Valley Berkshire)
- The LEP has the lowest deprivation level associated with crime in the country meaning the lowest risk of personal and material victimisation
- The LEP also scores well for the income, employment, education and health domains.
- The main types of deprivation associated with the LEP are the barriers to housing and services and the quality of living environment where it was ranked 17 most deprived out of the 39 LEPs in the country

The rank is based on the average score of the indicators than make each domain and the index as a whole.

Domains of deprivation and the York, North Yorkshire and East Ring LEP deprivation rank out of 39 LEPs



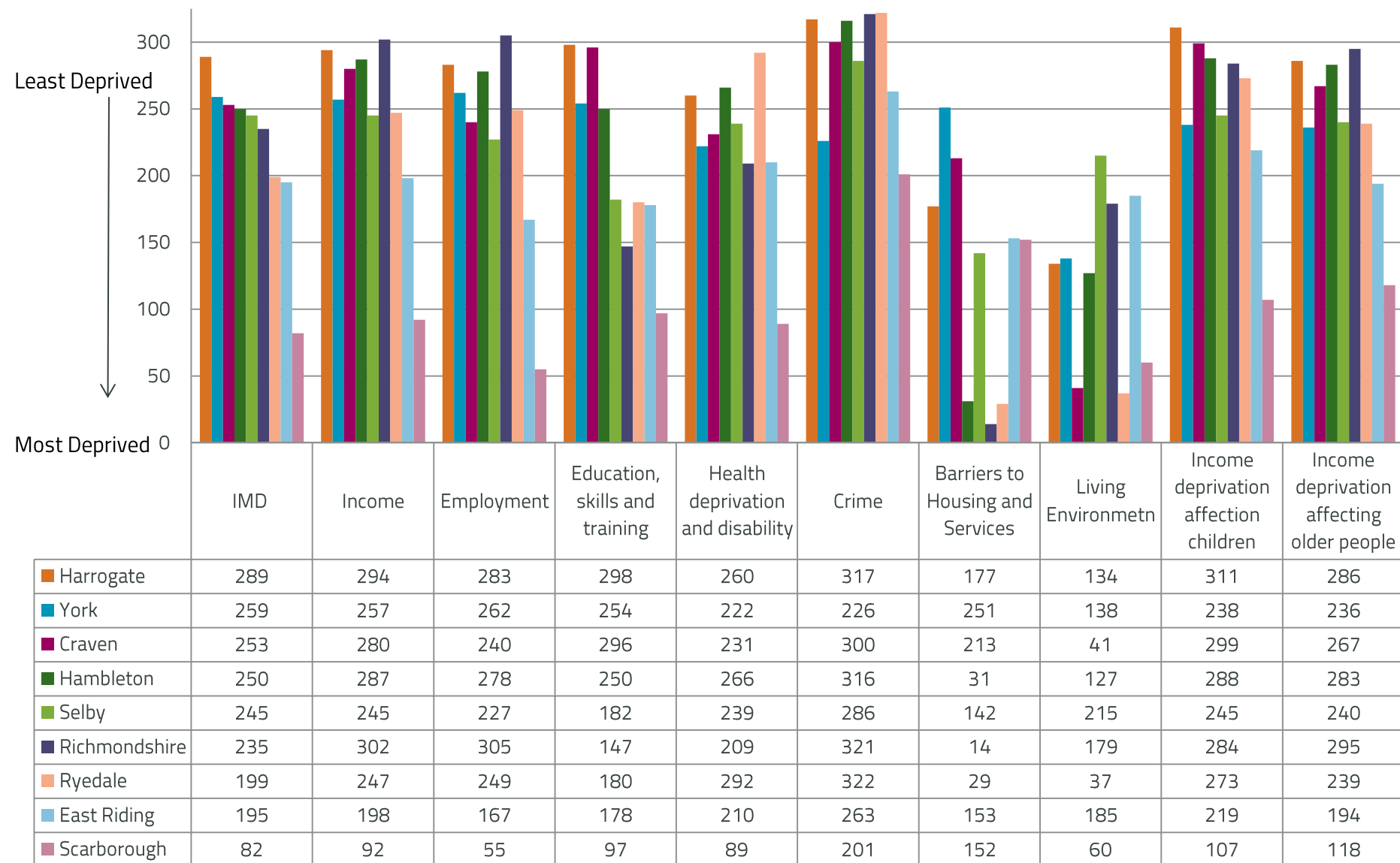
In addition to the Index of Multiple Deprivation and the seven domain indices, there are two supplementary indices: the Income Deprivation Affecting Children Index (IDACI) and the Income Deprivation Affecting Older People Index (IDAOPI). The LEP is the 4th least deprived LEP for both measures.

Variation within the districts of the LEP

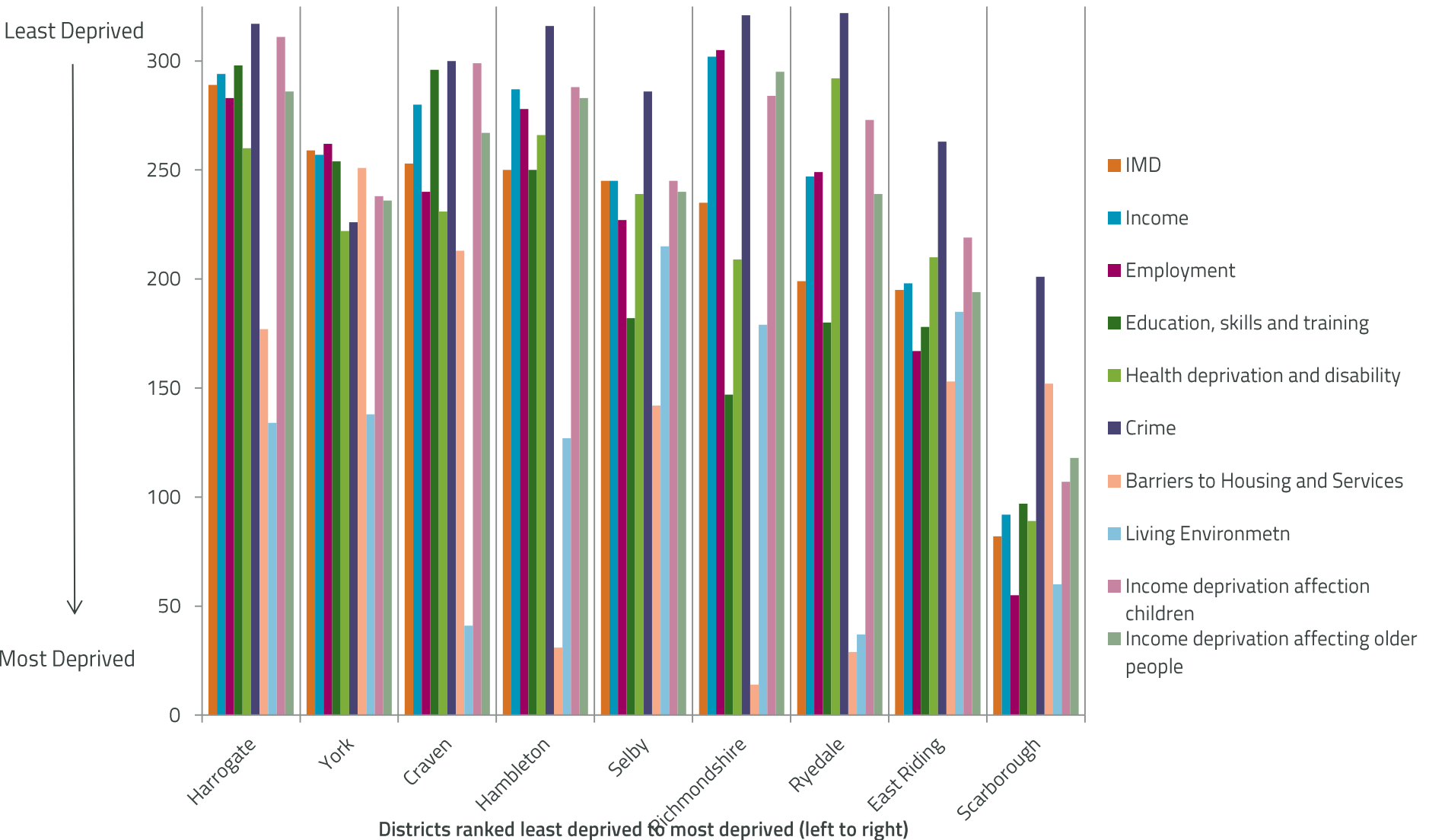
Although the LEP scores fairly strongly on most IMD domains there are variations within its 9 districts that show a contrast in types of deprivation. Headlines are as follows:

- Harrogate is the least deprived LA within the LEP scoring higher than 88% of Local Authorities in England. Scarborough however is the most deprived Local Authority in the LEP with 75% of LAs in England scoring higher than it.
- York, Craven and Harrogate are in the least deprived half of LAs for barriers to housing and services with all other districts in the most deprived half. Hambleton and Ryedale are in the lowest 10% of Local Authorities in England for this domain and Richmondshire is in the lowest 5% ranked 14 out of 326 Local Authorities.
- The living environment domain is ranked least deprived in Selby and most deprived in Craven, Ryedale and Scarborough
- The Education, skills and training domain is ranked in the least deprived 10% of LAs in Harrogate and Craven and ranked in the least deprived 25% of LAs in York and Hambleton.
- 72% of LAs in England are less deprived than Scarborough for health deprivation and disability whilst all other LAs are less deprived than between 64-90% of England LAs

Domains of Multiple Index of Deprivation and how the LEPs LAs rank out of 326 Local Authorities



Deprivation by domain with district on X axis



Conclusions

- The York, North Yorkshire and East Riding Local Enterprise partnership is one of the least deprived areas in England and the least deprived out of all the LEPs in the North of England and East and West Midlands
- Despite this lack of deprivation there are areas of the LEP where deprivation is high, particularly towards the coast and in small pockets of urban areas.
- The types of deprivation most prominent in the York, North Yorkshire and East Riding LEP involve barriers to Housing and services (which is based on physical proximity to local services and housing affordability) and the quality of living environment (which involves quality of housing, air quality and road traffic accidents).